

# Pom Pom de Paris

*French General*



13573 14



13575 19\*



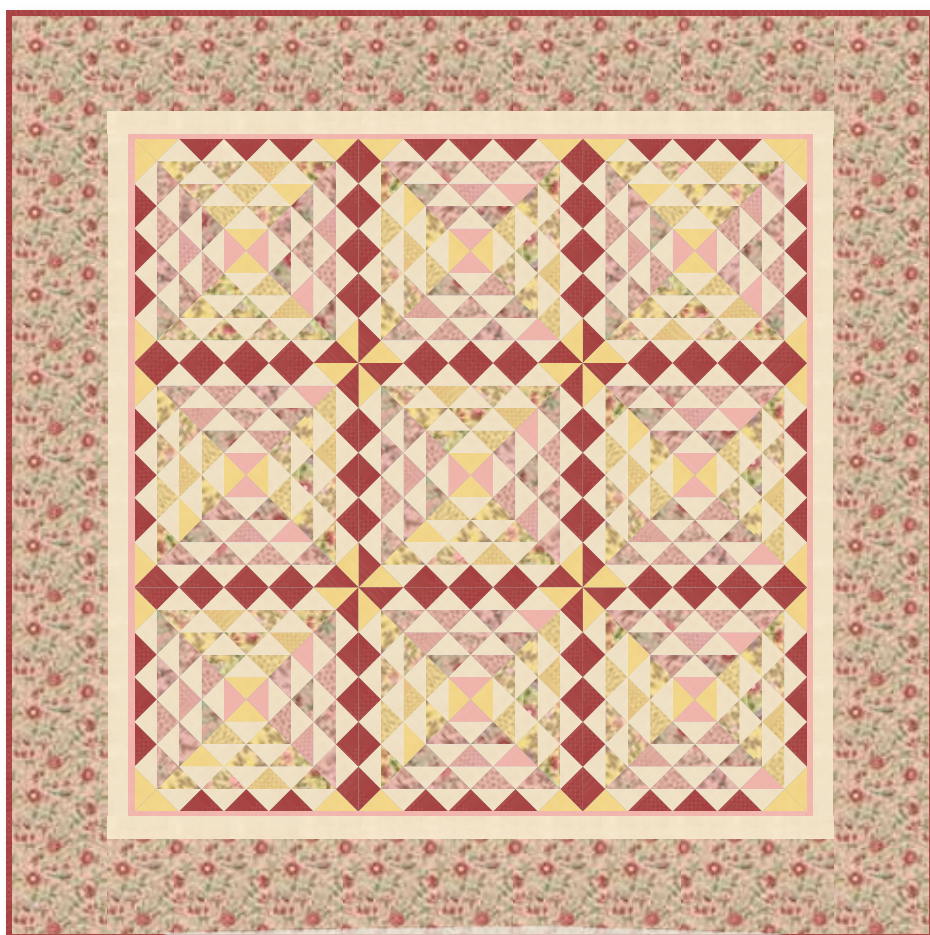
13571 14\*



13578 14\*



13576 14\*



PS13570 Pom Pom de Paris Quilt 86" x 86"



54091 20

54" - 55% Linen & 45% Cotton



\*Reduced to 30% to show pattern



13570 14



13529 73



13577 14



13574 14\*



54091 19

54" - 55% Linen & 45% Cotton



## French General



In preparation for family camping trips, Kaari Meng's mom stitched matching outfits for her five children. "There's a picture of us at the Grand Canyon and we're all wearing navy blue shorts and red-and-white striped shirts," says Kaari. "It made us easy to spot at campgrounds."

That kind of regimentation might have turned out conformists. Instead, all five siblings work in creative fields. Kaari is no exception: for years she designed and made jewelry for clients that included Anthropologie. In 1997, wanting to spend time with her new daughter, she left the jewelry business and with her husband opened French General in the barn behind their New York home. In 2003 they moved to L.A., where, in both their brick-and-mortar shop and online, they sell the beads, buttons, ribbons, and textiles they collect each summer in France. When Kaari's book *Home Sewn* was published in 2008, *Moda* came knocking. Kaari's currently working on her 7<sup>th</sup> line of French-inspired fabric.

"From my mom, I inherited my love of France's culture, atmosphere, and way of life," says Kaari. "From my dad, I inherited my sense of design. He was a rep for Georg Jensen and Kosta Boda and he'd come home each night and set up table displays."

Kaari's grateful for these points of view. "For me, it's about color and texture and old materials and the thrill of the hunt and the tiny bit of textile that may inspire a whole fabric line," she says. "I feel lucky to do something I love."



# Pom Dom de Paris

*French General*



13573 11



13577 11



13571 11\*



13576 11



13578 11



13574 11



13529 70



13571 13



13575 18\*



13573 13





13572 16\*



13578 19



13576 13



13572 15



13577 13\*



13574 13\*



13570 11\*



13529 72\*



13575 11



# Pom Dom de Paris

*French General*



13573 12\*



13575 16\*



13571 12



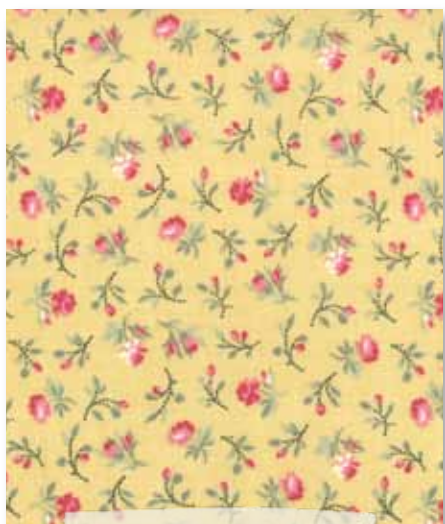
13572 14



13576 12\*



13570 12



13577 12\*



13574 12





13578 12



13529 71\*



54091 18

54" - 55% Linen & 45% Cotton



13575 13\*



13572 11\*



54091 17

54" - 55% Linen & 45% Cotton



*French General*

*March Delivery*

SKUS: 45" PRINTS: 40, 54" PRINTS: 4  
CONTENT: 45" 100% COTTON,  
54" 55% LINEN & 45" COTTON

- ASST. 13570-15 15 YARDS OF EACH
- ASST. 13570-10 10 YARDS OF EACH
- ASST. 13570-10H 10 YARDS OF 20 SKUS\*
- 13570AB BUNDLE: 40 SKUS 18" x 22"
- 13570F8 BUNDLE: 40 SKUS 9" x 22"
- 13570JR JELLYROLL
- (40) 2½" x 45" STRIPS – PK 4
- 13570LC LAYER CAKE
- (42) 10" x 10" SQUARES – PK 4
- 13570PP (42) 5" x 5" SQUARES – PK 12
- PS13570 PROJECT SHEET – PK 25