

Spa

Deb Strain

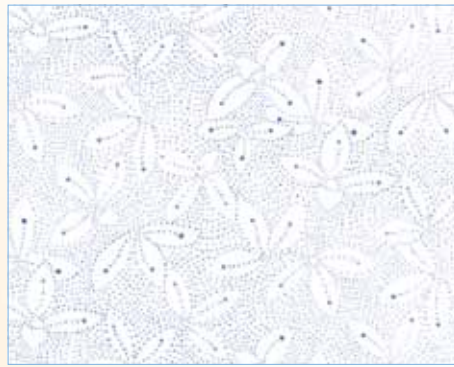
The colors blue and white always seem so clean and fresh. The old blue and white quilts that I collect remind me of a summer morning. Those lovely, cherished quilts inspired this group along with the wide array of blues available. Paired with only white, this color grouping provides a never ending variety of color combinations. Blue and white patterns can range from contemporary to nostalgic - soft and muted to bold and dramatic - light hearted to rich. But always with a clean fresh tone that reminds me of a new day.

moda

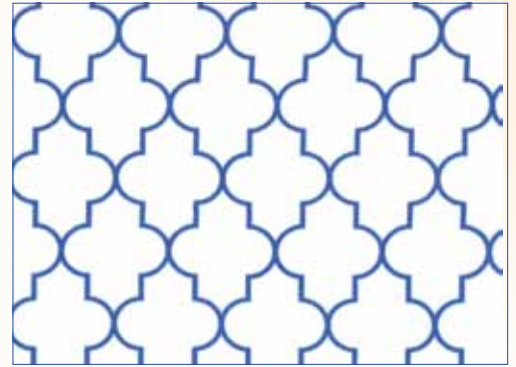




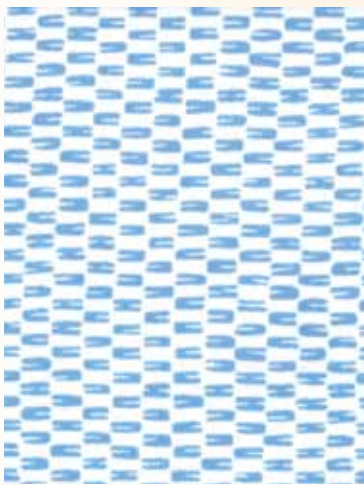
*19589 11 White Rose



19587 11 White Rose



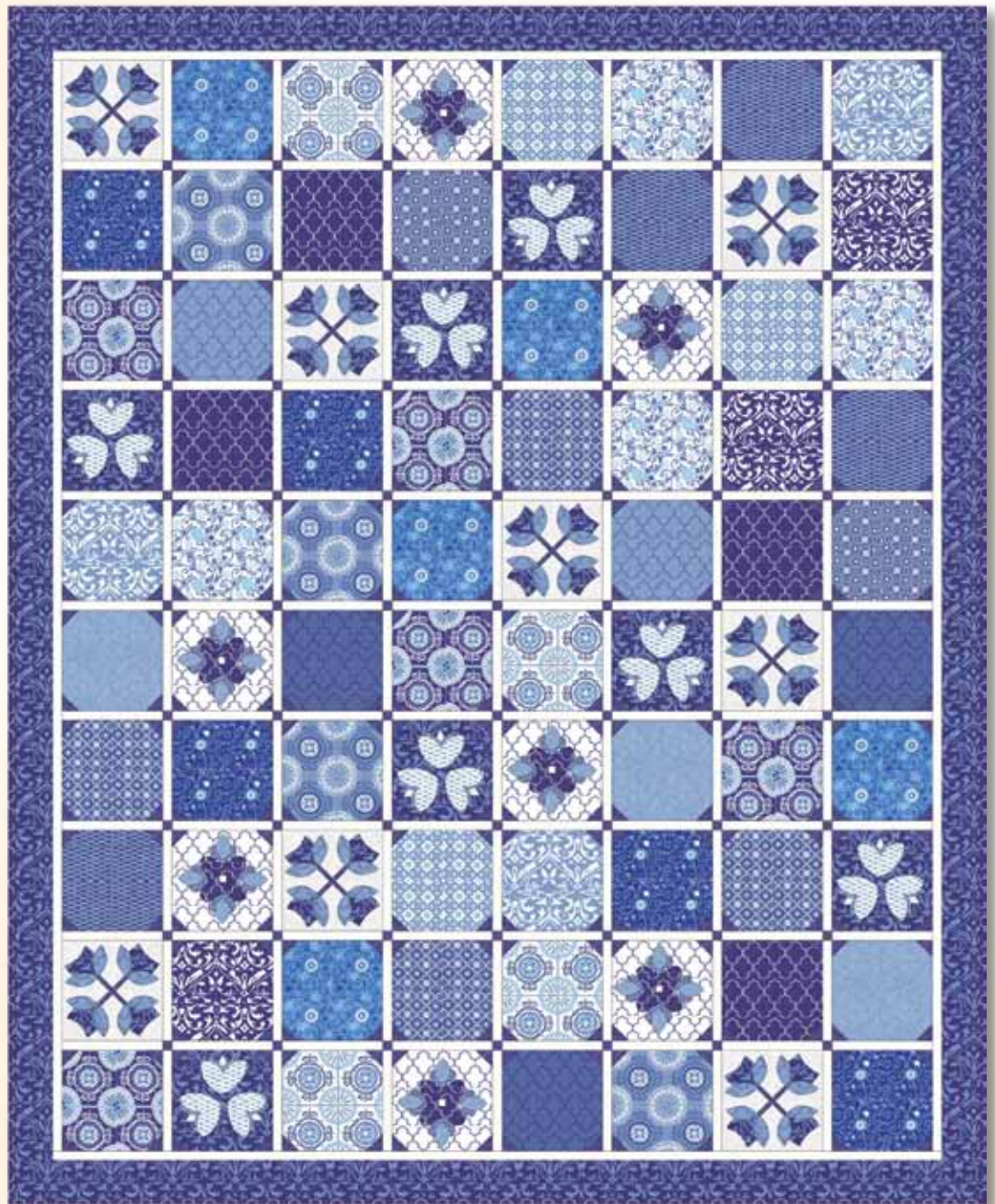
*19585 12 White Rose



19588 12 White Rose



*19581 13 White Rose



CHD 1201 or CHD 1201G – Dutch Tiles Size: 76" x 94"



CHD 1203 or CHD 1203G—Blue Rhapsody Size: 66" x 80"

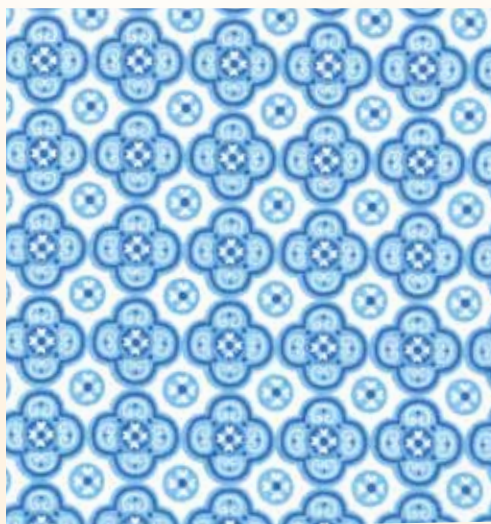
EYE: debstrain.com
debstrain.blogspot.com



19582 15 White Rose



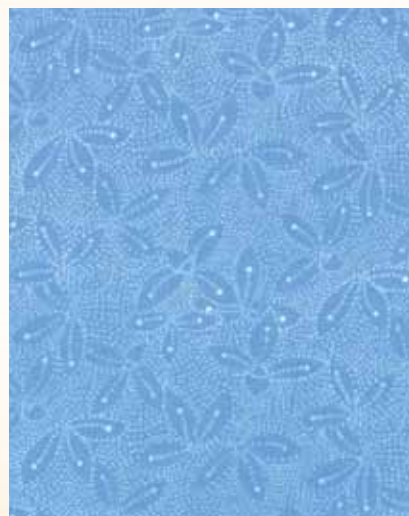
*19581 15 Spa Blue



*19586 11 White Rose

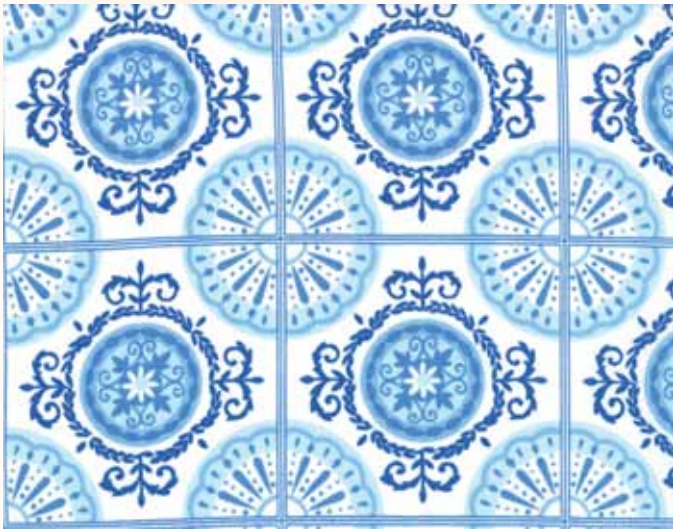


19589 12 Spa Blue

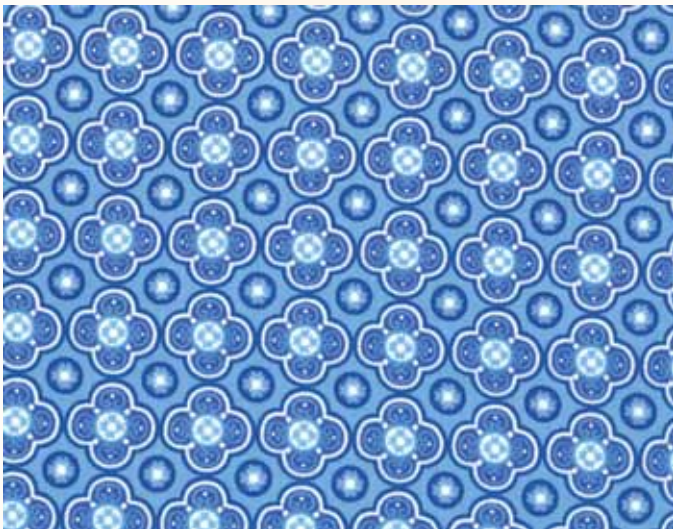


*19587 12 Spa Blue

Panel 24"x44"



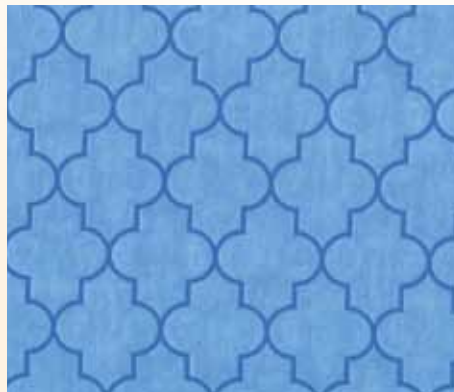
*19583 11 White Rose



19586 12 Spa Blue



19582 13 Spa Blue



19585 16 Spa Blue



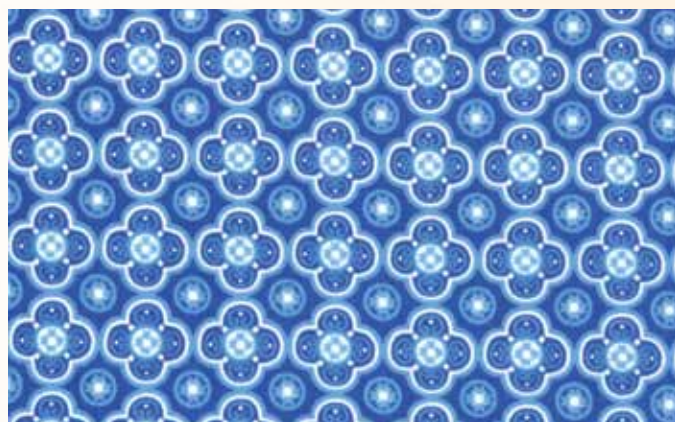
*19580 14 Cobalt



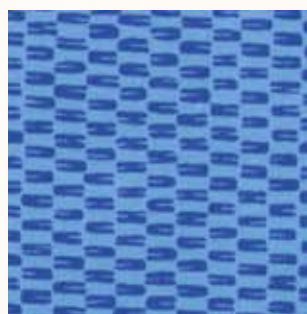
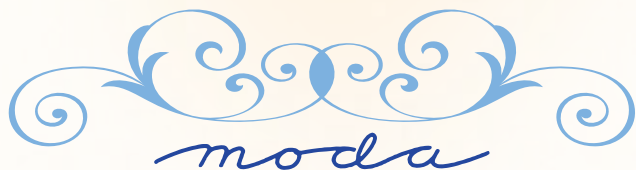
*19583 12 Spa Blue



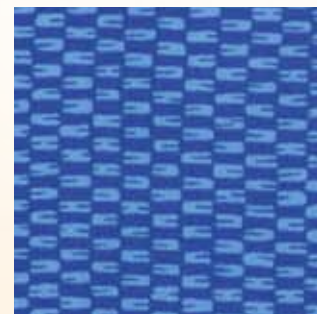
19581 16 Cobalt



*19586 13 Cobalt



*19588 17 Spa Blue



19588 18 Cobalt



*19585 14 Cobalt



19585 17 Azure



*19582 14 Cobalt



19583 13 Cobalt



CHD 1202 or CHD 1202G – Delft Trivet Size: 41" x 41"



*19587 13 Cobalt



*19581 17 Tonal Cobalt



19589 13 Cobalt

Delivery August

Skus: 27 Prints 44"-45" 100% Premium Cotton

Asst. 19580-15 – 15 Yards of Each
 Asst. 19580-12 – 12 Yards of Each
 Asst. 19580-10 – 10 Yards of Each
 Asst. 19580-10H – 10 Yards of 15 Skus

19580AB – Bundle: 27 Skus -18" x 22"
 19580JR – Jellyroll (40) 2 ½"x45" Strips - PK 4
 19580LC – Layer Cake (42) 10"x10" Squares - PK 4
 19580PP – (42) 5"x5" Squares - PK 12
 JR's, LC's & PP's do not include the Panel.
 JR's, LC's & PP's include two each of 19581, 19585, 19587 & 19588.