

miss kate

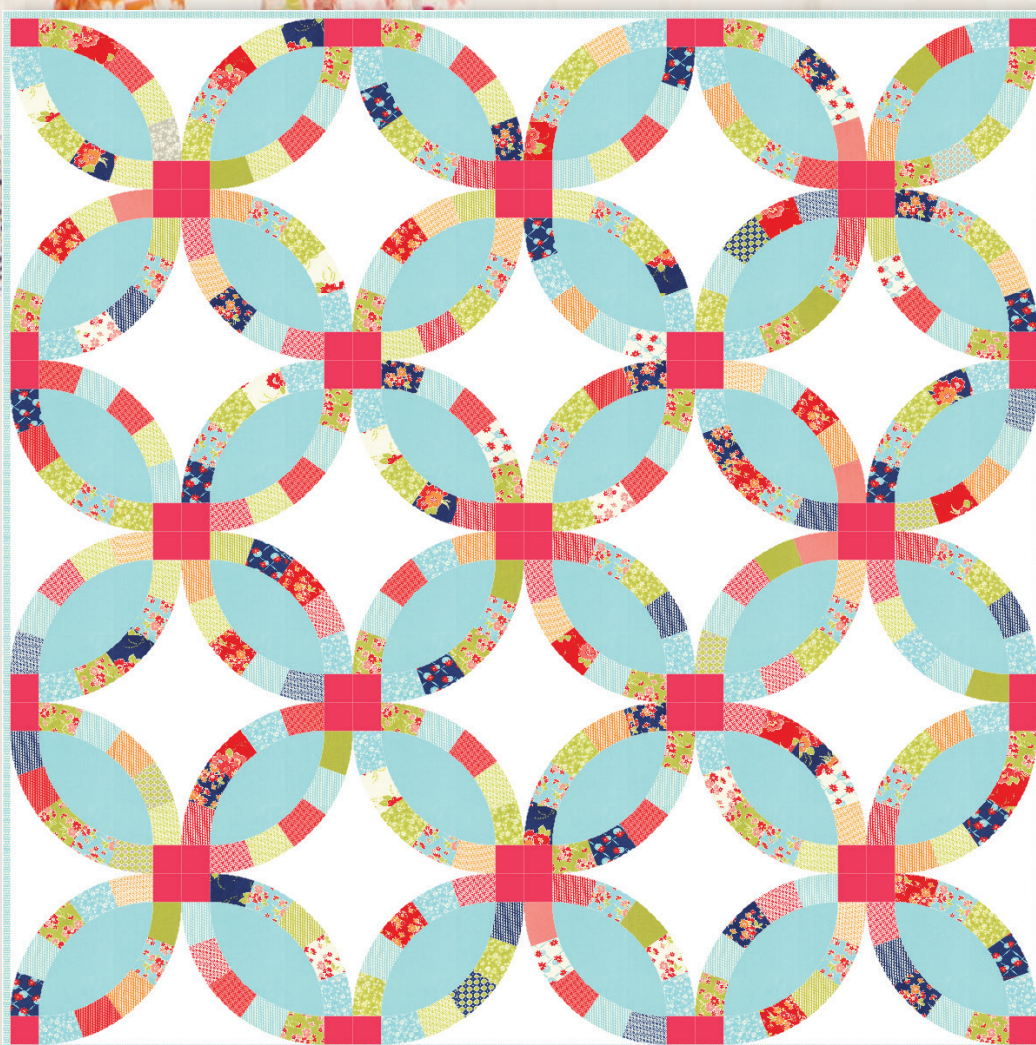
prints and flannels

Bonnie & Camille



fresh and playful, Bonnie and Camille's newest line was inspired by Ruby's favorite little sister, Kate. As little girls they spent summers out on the porch swing, telling stories and stitching. This cheery line is full of Kate's favorites: red, aqua, and navy, dainty flowers, vintage prints, and pretty little scallops. There's nothing sweeter than sisters.

These sweet prints are twice as nice in a select variety of super soft flannels, too!

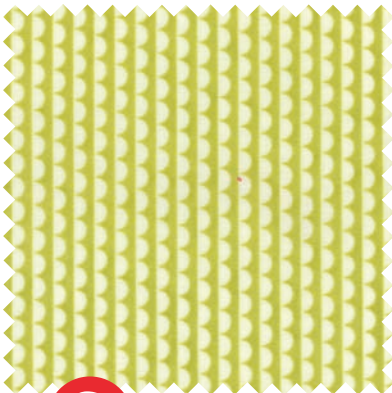


No CW 970/ CW 970G Kate's Big Day Size: 72" x 72"
1 QUILT 2 WAYS (Double Wedding Ring, Petal version shown on pg 16)

F = *Flannel*
Add F to end of Stock #



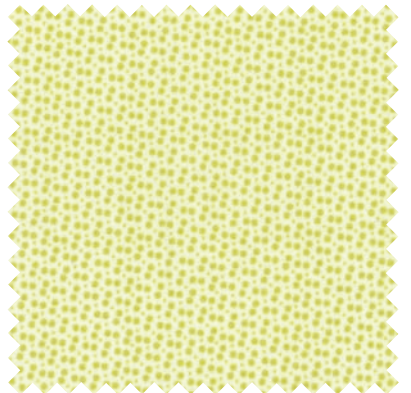
F № 55091 13*
Apple



F № 55092 13*
Apple



F № 55096 13*
Apple



№ 55094 13
Apple



№ 55098 13
Apple



F № 55095 13
Apple



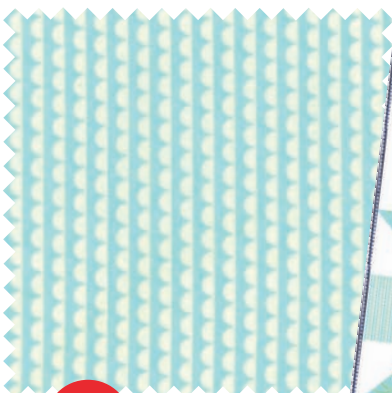
№ 55097 14*
White Apple



F № 55090 12*
Aqua



F № 55091 12*
Aqua



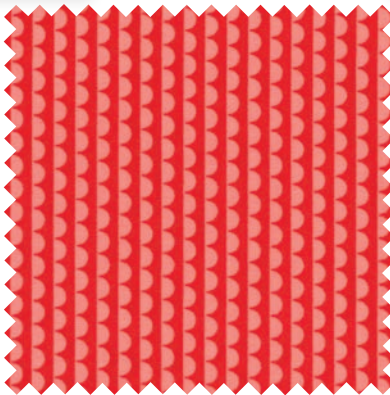
F № 55092 12*
Aqua



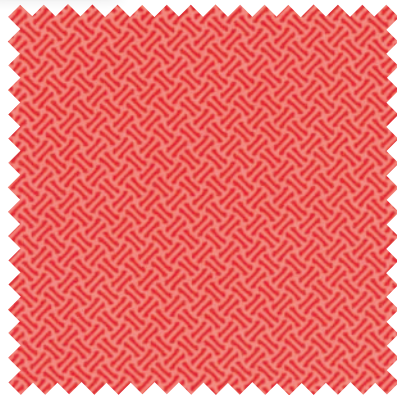
№ TB 173/ TB 173G Red Letter Day Size: 67.5" x 67.5"

F = Flannel

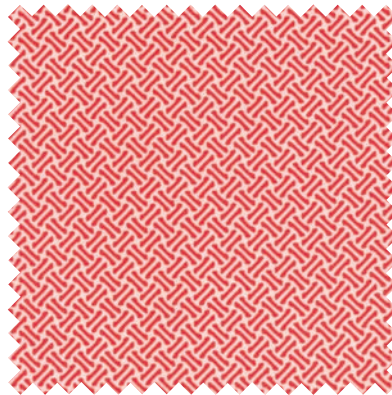
Add F to end of Stock #



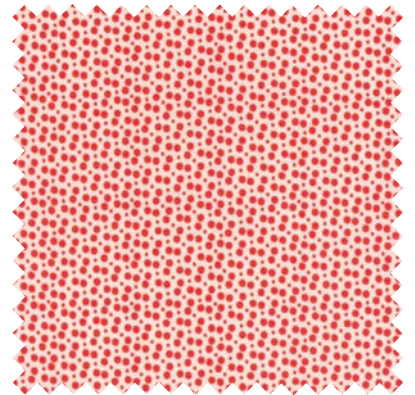
No 55092 15
Coral



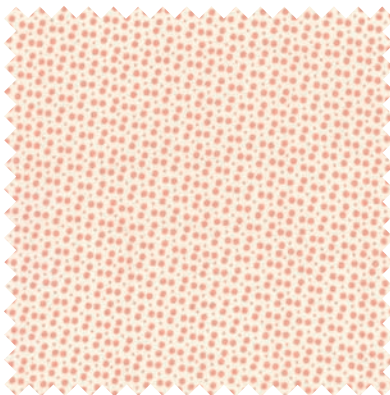
No 55093 15*
Coral



No 55093 11
Red



No 55094 11
Red



No 55094 15*
Coral



No 55098 15
Coral



F No 55090 14*
Creamy White



Charm Pack Friendly



F No 55091 14*
Creamy White



No 55094 14*
Creamy White



No 55098 11
Red



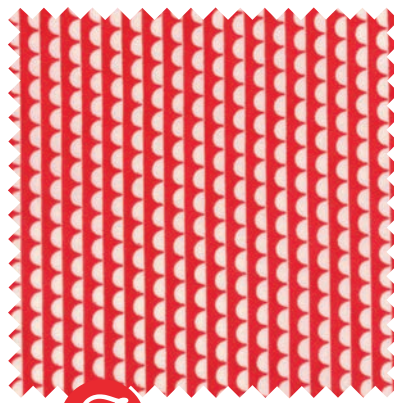
F No 55091 11
Red

01 CW 971
CW 971G
Sunday Bows
Size: 57" x 72"

02 TB 171
TB 171G
Mini Dwell
Size: 13" x 15"



F № 55090 11*
Red



F № 55092 11*
Red



№ 55097 24
White Aqua



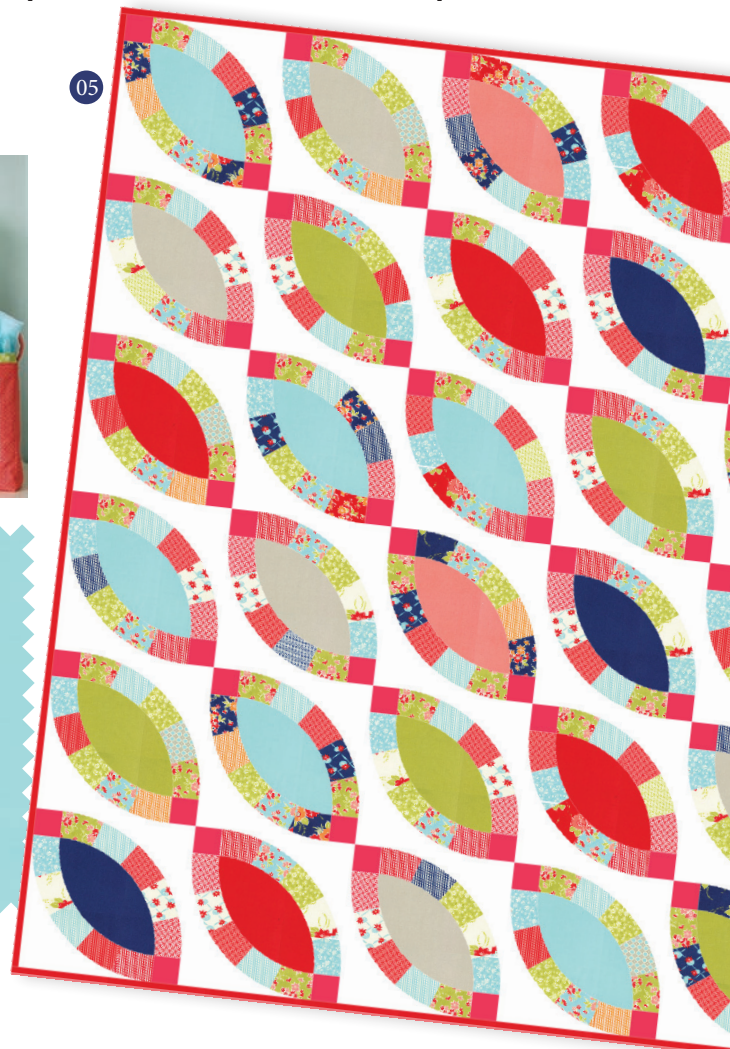
03



F № 55096 12*
Aqua



04



05

03 CW 972
CW 972G
Cozy
Size: 90" x 90"

04 CW 973
CW 973G
Handmade Gift Bags
Size: multiple sizes

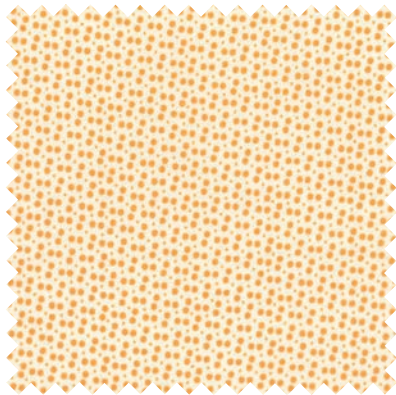
05 CW 970
CW 970G
Kate's Big Day
1 Quilt 2 Ways
Petal, Dbl Wedding Ring
version shown on pg 13.
Size: 72" x 72"



F № 55095 12*
Gray



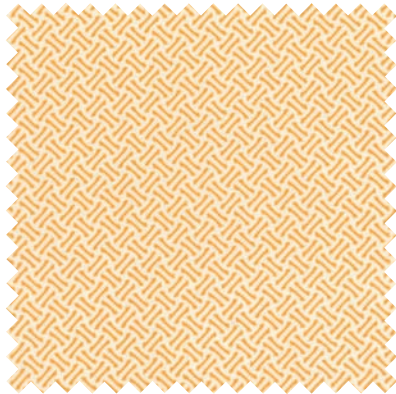
№ 55098 12
Aqua



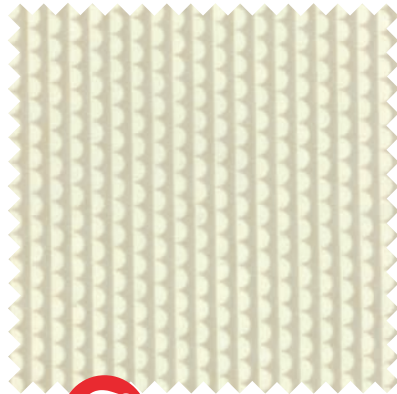
No 55094 16
Tangerine



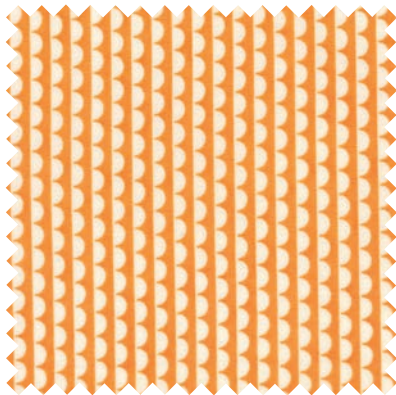
No 55098 18
Gray



No 55093 16
Tangerine



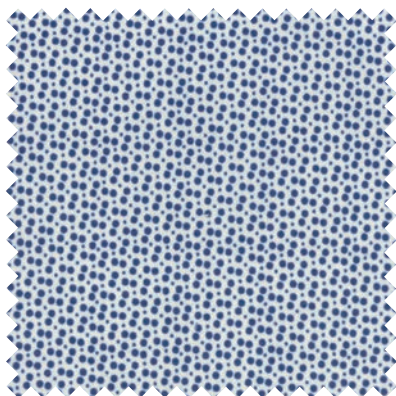
F No 55092 18*
Gray



No 55092 16
Tangerine



F No 55096 18*
Gray



No 55094 17*
Navy



F No 55091 17
Navy



F No 55090 17
Navy



01



02

F = Flannel
Add F to end of Stock #

55090

Asst.
15F

Asst.
10F

ABF

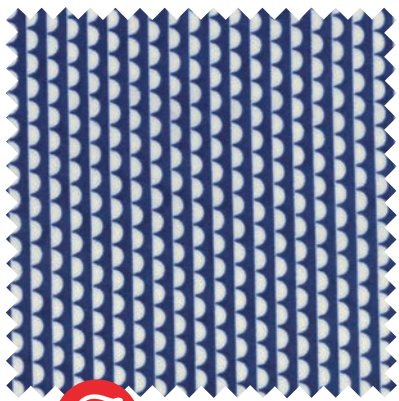
F8F

LCF

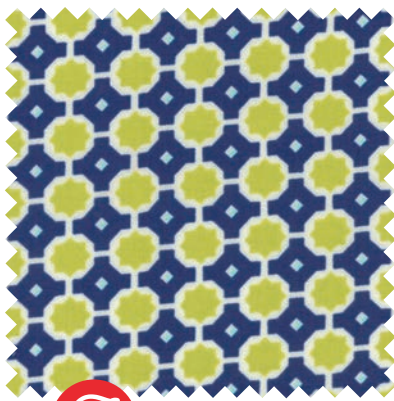
PPF

• 100% Premium Cotton • 20 Prints
LC's and PP's include two of each.

Delivery: August, 2014



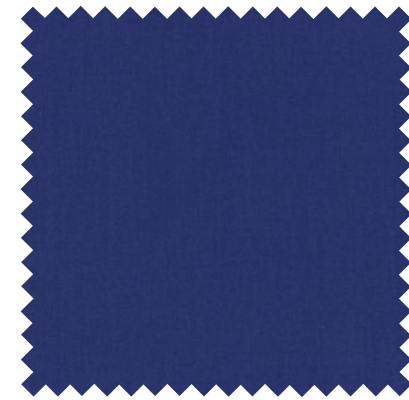
F № 55092 17
Navy



F № 55095 16*
Navy



№ 55097 17
Navy



№ 55098 17
Navy



01 TB 174
TB 174G
Mini Round
and Round
Size: 11" x 11"

02 TB 176
TB 176G
Sunday Scallop Sewing
Size: multiple sizes

03 TB 172
TB 172G
Rise & Shine
Size: 60" x 72"

04 TB 175
TB 175G
Mini Rise and Shine
Size: 13.5" x 13.5"



04



03

Layer Cake Friendly

www.modafabrics.com

Plain

55090

Asst.
15

Asst.
10

Low Cal
20

AB

F8

HC

JR

LC

MC

PP

• 100% Premium Cotton • 40 Prints

Delivery: August, 2014

Jr's, LC's, MC's and PP's do not include 37090. Jr's, LC's, MC's and PP's include two each of 37097.