



panel includes:

- 1 CHRISTMAS COUNTDOWN CALENDAR WITH TREAT POCKETS!
- 17 HAPPY HOLIDAYS BUNTING TRIANGLES
- 6 LARGER ELEMENTS FOR QUILT BLOCKS AND PUSHIES
- ASSORTED SMALLER ELEMENTS TO USE AS YOU WISH

Bias tape shown on bunting: 71486-46



Peppermint PLEASE

by Sarah Watts

Peppermint Please is a three-piece panel collection by Sarah Watts celebrating the winter and Christmas season! See the additional two panels on the next pages.



JUNE DELIVERY

3 premium 100% Ruby Star Cotton panel prints

PEPPERMINT PANEL

This countdown calendar panel by Sarah Watts is the follow up to her Halloween Countdown Panel - it's the exact same format, but recreated in a sweet winter theme!

Instructions for treat pocket calendar, bunting, and plushies printed on panel. Panel comes individually packaged.

Entire panel approx. 58" x 70"

*all these projects
from one panel!*



RS2040-1IP

PEPPERMINT PANEL | MULTI

SUGGESTED BRUSHED COORDINATES & COMPLEMENTS

RS2005 12 18 19M 32M 31M

SUGGESTED SPECKLED COORDINATES & COMPLEMENTS

RS5027 91M 94M 107M 74M 84M

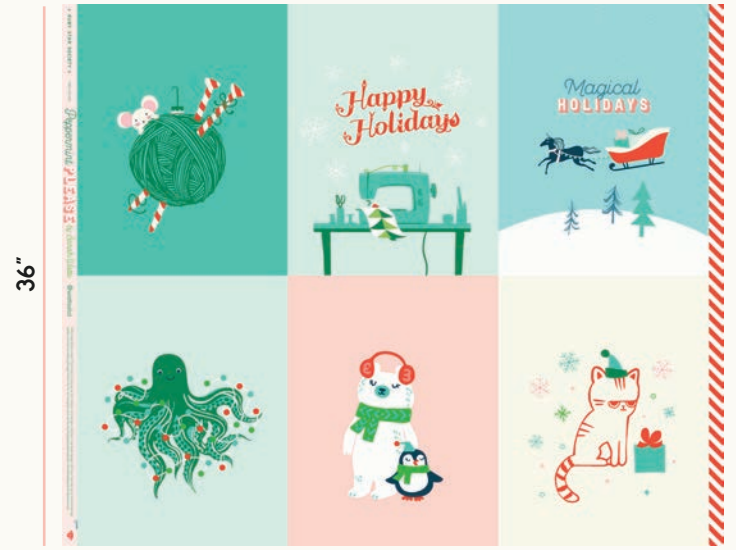
SUGGESTED MODA BELLA SOLID COORDINATES & COMPLEMENTS

9900 88 222 378 76



Peppermint
PLEASE
by Sarah Watts

44"



36"

RS2041-11

GIFT | MULTI

GIFT PANEL

Whip up a whole collection of gift bags with Sarah Watts' Gift panel and your favorite drawstring bag pattern. One-yard panel is printed with 6 designs, each approx 18" x 12½". (36" x WOF)



JUNE DELIVERY

44"

36"



RS2042-11

WRAP | MULTI



WRAP PANEL

The Wrap panel by Sarah Watts is a printed 4-fat-quarter, one-yard panel. With every yard of fabric, you get four prints! Use in all your favorite FQ projects or as supplemental fabric for the rest of the projects in Peppermint Please. (36" x WOF)



JUNE DELIVERY