



**MELODY MILLER**

Rise by Melody Miller started out as a personal 100-day drawing challenge in 2019, focused mostly on drawing flowers. By the end of the hundred days Melody had found a new voice in her drawing style. She created a fabric collection from the drawings, one that celebrates growth and making space for change. Rise includes a stunning border print in three colorways (24" x WOF), each matching a Spark basic for lots of fun piecing options, and one rayon.

**NOVEMBER DELIVERY**

- 16 premium 100% Ruby Star Cotton prints
- 1 Rayon print
- 5 108" premium 100% Cotton Sateen prints

**RS0011**

Asst. 15    Asst. 10

HY    FQ    JJR    JLC    PP

Assortments and precuts do not include rayon or 108" backings. FQ, JJR, JLC and PP do not include panels.

**SUGGESTED SPECKLED COORDINATES & COMPLEMENTS**

RS5027    14M    67M    62M    64M    26M    50M    55M

**SUGGESTED SPARK COORDINATES & COMPLEMENTS**

RS0005    33M    20    28    23    48\*    15\*    35M

36M    12    49M    49M

**SUGGESTED MODA BELLA SOLID COORDINATES & COMPLEMENTS**

9900    200    166    301    293    87    115    20

DREAM | SHELL



RS0011-11M

DREAM | PEONY



RS0011-12M

FLY | SHELL



RS0013-11M

FLY | KISS



RS0013-12M

SHINE | SHELL



RS0014-11M

SHINE | PEONY



RS0014-12M

DREAM | PEACOCK



RS0011-14M

GROW | SHELL



RS0012-11M

GROW | PEONY



RS0012-12M

GROW | BRIGHT BLUE



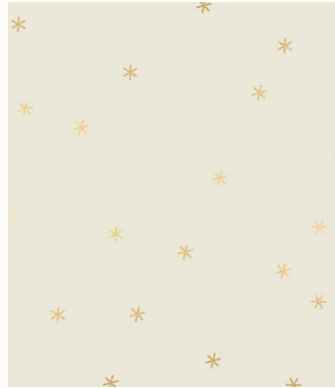
RS0012-14M

FLY | BRIGHT BLUE



RS0013-14M

SPARK | SHELL



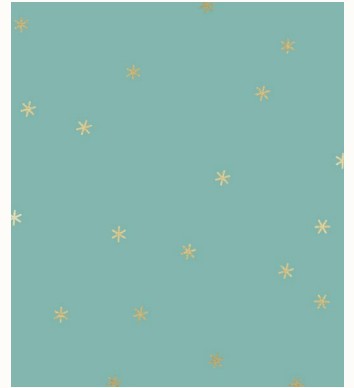
RS0005-33M

SPARK | CAYENNE



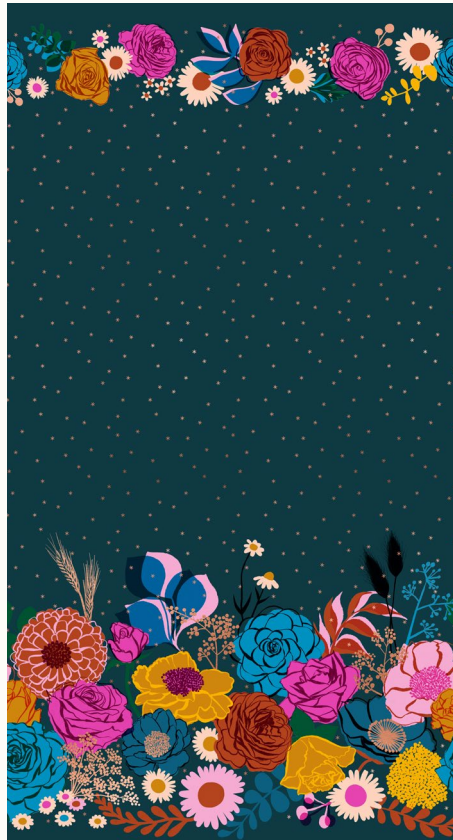
RS0005-35M

SPARK | OCEAN



RS0005-36M

SHINE | PEACOCK



RS0014-14M

SPARK | PEACOCK

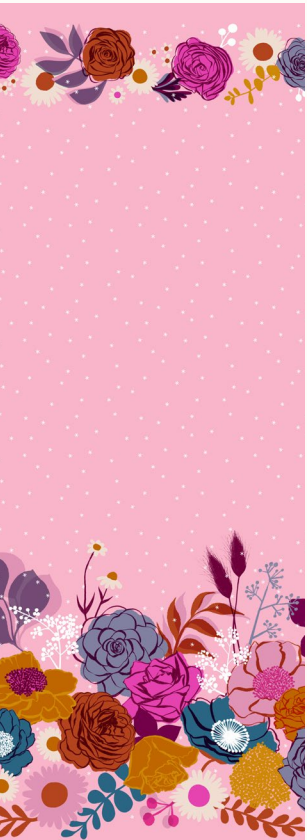


RS0005-37M

RAYON BLOOM | SHELL



RS0017-11R







Melody Miller created five large scale 108" wide quilt backings to accompany her Rise collection. These bold, beautiful florals are printed on silky 100% cotton sateen.

**NOVEMBER DELIVERY**

5 108" premium 100% Cotton Sateen prints



BLOOM | SHELL

RS11165-11



BLOOM | BRIGHT BLUE

RS11165-12



BLOOM | PEONY

RS11165-13



BEAM | SHELL

RS11168-11



BEAM | DARK TEAL

RS11168-12





A



**A. PP 103**  
Patchwork & Poodles  
Zesty  
58" x 70"

**B. PP 105**  
Patchwork & Poodles  
Harvest Star  
60" x 80"

**C. PSRS0011**  
Ruby Star Society  
Project Sheet  
Rise Curtains

C



B



**FPC 022**  
Friday Pattern Co  
Wilder Gown (adult)

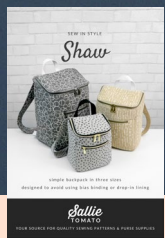


PPP 18 Pen + Paper Patterns - Fresh as a Daisy

48" x 48"



PPP 18 Pen + Paper Patterns - Fresh as a Daisy



LST 134  
Sallie Tomato  
Shaw  
HARDWARE KIT AVAILABLE - LST134G





59" x 63"



EQ0 2216 Eye Candy Quilts - Big Plaid

81" x 81"

